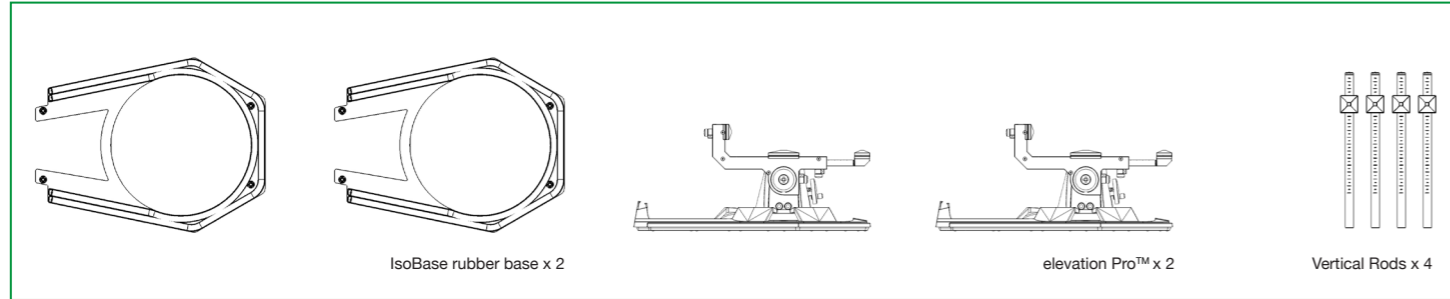




Contents



Welcome to the World of Elevation Pro™

Thank you for purchasing our Elevation Pro™ Medium Speaker Stands. This is our professional high-end model designed over many thousands of hours to provide what we believe is the best Audio Elevation Enhancement benefits available anywhere in the world. **Before assembling your new product, please take time to read through this QuickStart Guide and follow its instructions. This is very important to avoid damage or harm.**

Our purpose at Ardán Audio is to be the first, to be the best, and to continuously improve our products by listening to our customers.

Please drop us a line at queries@ardanaudio.com. We're not so big, so you may even get hold of one of the owners - Brent Finlayson Smith, or John Gallen. We're always interested in feedback and new ideas. Enjoy our products.



Warning Notices/Caution!

Assembly other than specified in the QuickStart Guide, or use of parts other than those designated, can result in accident, injury and/or damage. Ignoring warnings contained in this QuickStart Guide and subsequent incorrect use of the product could result in injury to person or to other equipment.

1. This medium Elevation Pro™ speaker stand is designed to support a maximum weight of 20 kg (44lbs) in an upright position, with maximum speaker dimensions of 390mm high x 292mm wide x 332 mm deep (15.3 inches high x 11.5 inches wide x 13 inches deep). Your warranty is void if you exceed our recommendations. This product is specifically designed to match a general medium range of speakers with these maximum dimensions. Please confirm that your speakers can be used with our Elevation Pro™ stands before you use the product. Ardán Audio provides other products for smaller or larger speaker ranges; please check our website for details.

2. Never tighten more than finger tight any tightening wheels on our devices. Each component should be firmly held by tightening, but not so tight as to indent and damage the alloy materials we have selected for our products.

3. We cannot accept liability for the stability or proper performance of our product if the rests are at unequal levels to one another or if the supports are not an equal distance from the centre of the EVP-M1. Markings are provided on the tilt barrel to ensure accuracy in positioning the speaker rods and rests and they must be used.

4. Do not leave this product where children play nor without a speaker on top where children may potentially fall on it. Do not use this product nor allow it to be used for any other purpose than its stated function.

5. Installation of the product in such a way that it is unstable can cause it to collapse and may result in injury. When in use, the product must be placed on a flat, solid and level surface. An uneven surface or floor may cause the product to fall over and could result in injury. Always remove audio speakers and other equipment from the product prior to moving.

6. Do not lean on the product or upon audio speakers when positioned on the product. Do not climb or step on the product. Do not bang or place your weight on, or lean any other weight on, any part of the product as this may result in damage to the product or injury to yourself.

7. Do not set up the stand in a hallway or in an area of frequent movement. Accidental bumping into the stand may result in injury and/or damage.

8. When tightening or loosening any parts of the product during assembly, be careful not to scrape your hands against the base rods or rear rods as injury can result.

9. Do not place this product near, under or over a radiator or heat register, or where it is exposed to direct sunlight as this may impair the operation of the product. Other than in relation to audio speakers (which radiate certain levels of heat) do not place other sources of heat on this product, such as candles, ash trays, incense or other similar items.

10. Do not place a water-containing vessel on this product, as this may directly (in the case of electrically motorized versions of the product) or indirectly (in the case of audio speakers supported on the product) result in a risk of fire or electric shock.

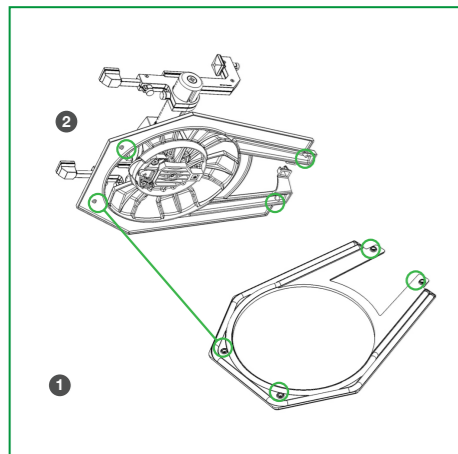
11. Do not expose this product to rain or place it near water (near a bathtub, washbowl, kitchen sink, or laundry tub, in a wet basement, near a swimming pool etc.). If this product accidentally gets wet you can clean it with a damp cloth when necessary. For all products, water should be wiped off all rubber parts as soon as possible to ensure that its elasticity is not affected. Do not use chemicals such as thinner or solvent.

12. Do not expose this product to extreme temperature conditions or extreme humidity conditions. Be sure to contact an authorized agent when installing your product in a location with heavy dust, high or low temperatures, high humidity or chemical substances.

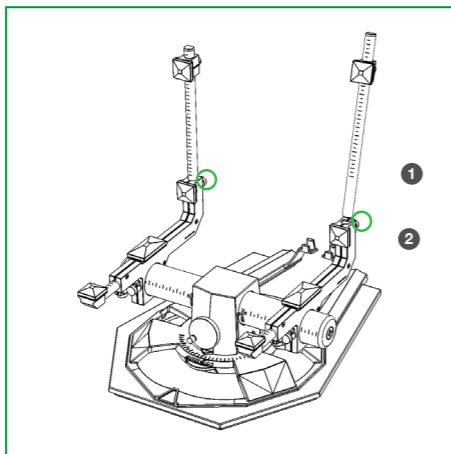
13. Power supply cords (from the product or otherwise) should be routed so that they are not likely to be walked on or pinched by items placed upon or against them, paying particular attention to cords at plug end, adapters and the point where they exit generally from the product.

14. It is essential to the use and operation of the product that you at all times follow the Instructions, Notes and Warnings detailed in this QuickStart Guide. A failure to do so will void warranties given in respect of the product.

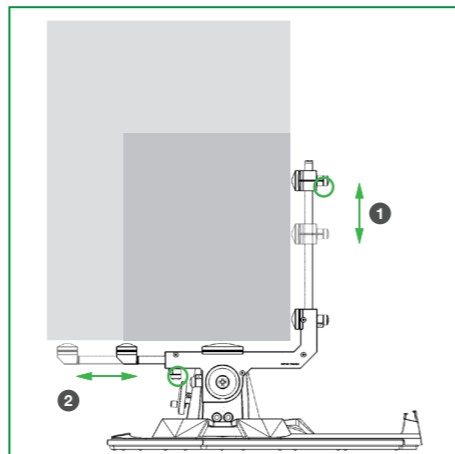
Setting up your Elevation Pro™



Place the IsoBase™ rubber base ① in the desired location, pointing approximately at your desired centre of listening. Now place the ElevationPro™ ② on top of the IsoBase rubber base (using the four locators).

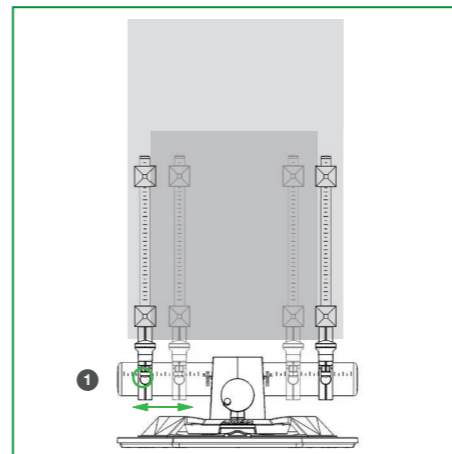


Insert the rear vertical rods ① into the back-rod holders ②. Finger-tighten them in place once they are fully seated.



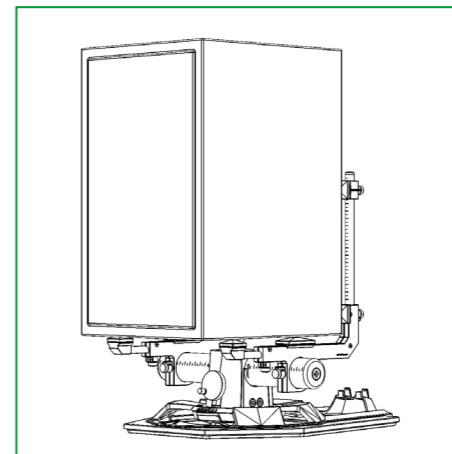
Adjust the rear vertical rods ① and horizontal rods ② to match your speaker size.

Note: The rubber supports on both the vertical and horizontal rods should sit flush with your speaker. The product has been designed so that the rear vertical rods will not meet with any heat vanes, or other speaker real estate on the rear of the speaker. Untighten a little the vertical speaker rest adjustment nuts and adjust the vertical speaker rests up or down if necessary, until you are satisfied that they are in the correct position for your speaker. Finger tighten the wheel nuts again. The rods should be adjusted to the same levels on both sides so that the support of the speaker is consistent.



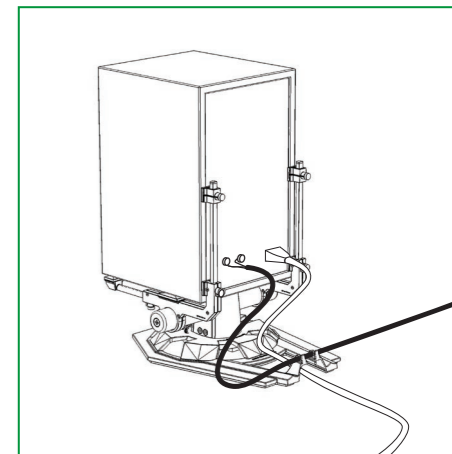
Ensure that the horizontal rests are at horizontal on the tilt barrel. Measure the width of your speaker, unfasten the width adjustment nuts ① on the tilt barrel and increase or decrease the width to match your speaker base dimension.

Note: The outside of the rest assemblies should be flush with the side of your speaker cabinet. Do not adjust the horizontal rests to be at unequal distances from the centre. Ensure that the rotation is set in the middle so that the speaker will face straight forward on the stand. Unfasten the front horizontal RotoLok™ wheel by gently turning anti-clockwise, turn the rest assembly until facing straight forward, then lock the RotoLok by gently turning clock-wise.



Place your speaker on the ElevationPro™ speaker stand. At this point there should be no leads attached to the speaker and you should ensure your back posture and centre of gravity are positioned to protect your back and muscles.

Note: Ensure that the speaker is securely balanced on all rests and that there are no wobbles or clear indications that the speaker is unstable or could fall. You may have to lift the speaker up and re-position a few times until you are satisfied it is in the right position. If the speaker is too heavy to lift yourself, or if you have positioned the speaker stand in a confined space where maintaining your balance will be difficult, be sure to enlist the help of someone else, and ensure they take steps to protect themselves during the placement operation. Do not attempt to move the speaker and stand together as a unit. If you need to move the speaker, un-cable it, protect your back, and move the speaker first.



Cable your speaker using the cable management guides at the rear of the speaker stand. The power lead cable (for an active speaker) should be fixed at 90 degrees to the speaker cable.

Note: Ensure there is enough cable to accommodate any rotational movement of the stand in a safe manner, and also that the cable(s) will not pinch or get caught in any manner by the tilt operation of the stand. Once the cable(s) leave this management feature, it is up to you to ensure the onward paths of the cables accord with your own aesthetic and safety requirements.



Adjust your tilt with the tilt adjustment wheel ①. Position and lock your speaker with the rotate baseplate ②. Elevate Your Sound.

Rotation: The maximum rotation of the rotate baseplate function is limited to 40 degrees either side of centre, and this supports the design specification for maximum weight loadings and the centre of gravity shift when a speaker is tilted and rotated. Do not attempt to rotate the base beyond the limits provided.

Backward Tilt: The maximum rear tilt is 36 degrees. In our research and testing, we have identified this figure of merit as the outer bound of decline tilt required in any lounge, desktop or other scenario, at a minimum of .5m (half a metre or about 19.6 inches) distance from the desired Centre of Listening. Do not try to wind the mechanism past the tilt limit point - that is, accept the natural limit that you will feel when winding the tilt mechanism and don't continue winding past it as this will void your warranty and most likely damage your stand and possibly render it unusable.

Forward Tilt: In this professional product, we have permitted a forward incline of 15 degrees for those recording studios where locating a medium speaker on the meter bridge is the only option. This does not mean we guarantee the product will support a speaker at any incline forwards, nor that the speaker will not tip off onto the recording desk if you wind the stand forward past horizontal. We accept no liability if this happens - again, you must use common sense and care in using our product in any situation where the product feature is capable of a potentiality, but your use leads to damage to yourself, to others, or to other equipment. We take our product responsibilities very carefully, but we expect users to understand that they could potentially misuse our product and cause serious damage either to themselves, to others, or to expensive other equipment.

Important Notes:

In pointing and tilting your speaker at the optimal aural location the sonic quality and power output of your speaker may be improved more than you realise and, therefore, established settings you have used before may be too loud or may cause ear damage on account of the Audio Elevation Enhancement improvement to your environment. Until you have gained experience with our products, please proceed cautiously and increase speaker volume from a normalised or lower starting position than you would usually do.

You should periodically check every wheel nut every two months or so to ensure that each component remains securely fastened. Our tests show that finger-tight, firmly held components will not come loose, however, it is not possible to test every speaker and some cabinet materials vibrate more than others if used at excessive volumes for extended periods. This may, in a very few instances, cause some wheel nuts to loosen slightly over an extended period of time.

For speakers that require mounting on their sides, you may do so with or without the rear speaker rods and rests in place but we cannot guarantee this will work for whatever speaker you choose to place on its

side, nor that it will be stable in tilt operation. We offer no guarantee or assumption of liability if you use the product with a speaker placed on its side.

Support

Email Ardán Audio at support@ardanaudio.com, call us at +353 1 2130708 (business hours are 9:30am to 5:00pm GMT Monday to Friday). Please do not send any returns by post as they may be rejected and lost. Returns are operated pursuant to our returns policy, which enables us to respond more quickly to you through our authorised local or regional representative(s). Please contact us by email or phone.

Warranty

For the terms of Ardán's warranty and related conditions in your location please see; <http://www.ardanaudio.com/Products/New-adjustable-speaker-stands> and click on the Media section.

copyright 2011 Ardán Audio Limited

Product: Ardán Elevation Pro™ (Medium) Speaker Stands: Model EVP-M1
Manufacturer: Ardán Audio Limited, Suite 202, Arena House, Arena Road, Sandyford, Dublin 18, Ireland. Registered in Ireland with company number 470101, VAT Number IE9700253 L.

Country of origin: Italy. Details of importer can be found on your receipt.
Key characteristics: Professional speaker stands for use with speakers of maximum dimensions and weight as set out within.